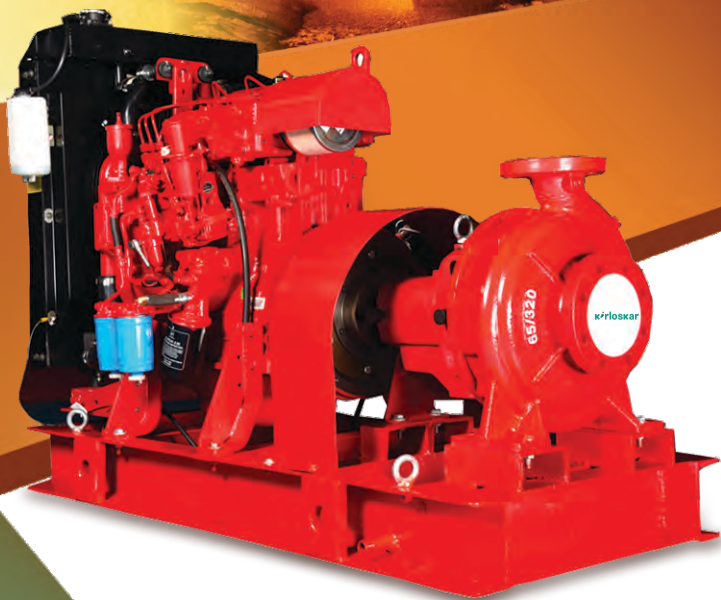


*Rely on us for
your safety*



KOEL Pumpset for Fire Application

Unmatched Quality and Reliability

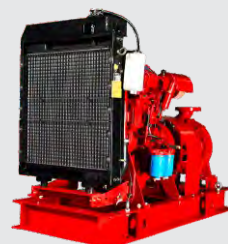
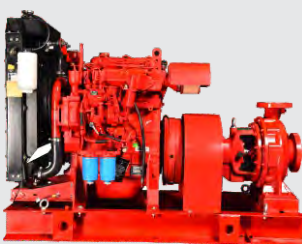
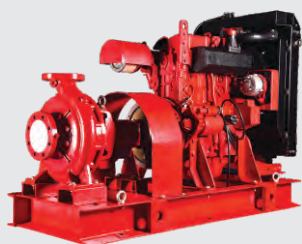
karloskar
Oil Engines

Sr. No.	Kirloskar Pumpset Differentiating Factors (Features)	Benefit to Customer
1	High Quality SKF Bearings in pumps. No China Make Bearings	Reliable & Long lasting performance
2	Integrated Pump shaft suitable for regular and spacer type coupling.	Ease in maintenance
3	High precision wear resistance casing rings	Longer and Trouble free working life
4	Standardized Stuffing Box compatible for both sealing arrangements, ie. Gland Packing and Mech. Seal	Cost Effective to Customer
5	Pump design as per latest norms of ISO 2858 / EN: 22858 std	Compact- Occupies less space at site compare to conventional pump
6	Superior design sturdy base plate with Chamfered Heavy Duty Channel	Minimize Vibrations and enhance Safety of Pump User
7	Digital Control Panel	Advance & Accurate Performance Monitoring
8	Engine Air Cleaner	Benchmarked with high level FM/UL International Standard
9	Mesh for Exhaust Manifold	Better operator safety
10	Class leader Paint Quality	Modern asthetic and glossy finish look with extended paint life

Technical Specifications - Kirloskar Fire Fighting Pump set

Sr. No	Flow (m3/hr)	Head (meter)	Kirloskar Pump Model	Pump Suction X Delivery Size (mm)	Engine Rating (HP)	Kirloskar Engine Model	Rated Speed (rpm)	Engine Type	Cooling Arrangement	Coupling Type	Overall Dimensions (LxWxH) mm	Weight Of Pumpset (Approx.-Kg)
1	96	70	KFP 65/320	100x65	50	3R1040NA	2150	Naturally Aspirated	Radiator	HOLSET 0.12 RB	1599x790x1234	730
2	137	70	KFP 80/320	120x80	68	4R1040NA	2150	Naturally Aspirated	Radiator	HOLSET 0.12 RB	1800x797x938	783
3	137	88	KFP 80/320	120x80	69	4R1040NA	2300	Naturally Aspirated	Radiator	HOLSET 0.12 RB	1800x797x938	784
4	171	70	KFP 80/400	125x80	92	4R1040T	2000	Turbocharged	Radiator	HOLSET 0.2 RB	1861x735x1165	813
5	171	88	KFP 80/400	120x80	112	4R1040TA	1800	Turbocharged After cooled	Radiator	HOLSET 0.2 RB	1892x936x1225	903
6	273	70	KFP 100/400B	125x100	112	4R1040TA	1800	Turbocharged After cooled	Radiator	HOLSET 0.2 RB	1892x936x1225	884

For inquiries & more Information visit <https://kfp.kirloskar.com>



kirloskar
Oil Engines

www.kirloskaroilengines.com

Kirloskar Oil Engines Limited

A Kirloskar Group Company

Laxmanrao Kirloskar, Khadki,
Pune 411 003 INDIA.

For more information,

Contact - pumpset@kirloskar.com



8806334433

koel.helpdesk@kirloskar.com

Stamp of
Authorised
Representative

Mark bearing word 'Kirloskar' in any form as a suffix or prefix is owned by Kirloskar Proprietary Ltd. and Kirloskar Oil Engines Ltd. is the Permitted User. This Catalog is copyrighted and may not be reproduced in any form not even parts of it, without previous written permission by copyright owners, Kirloskar Oil Engines Ltd. Product improvement is a continuous process. Kindly contact Kirloskar Oil Engines Limited for latest information.